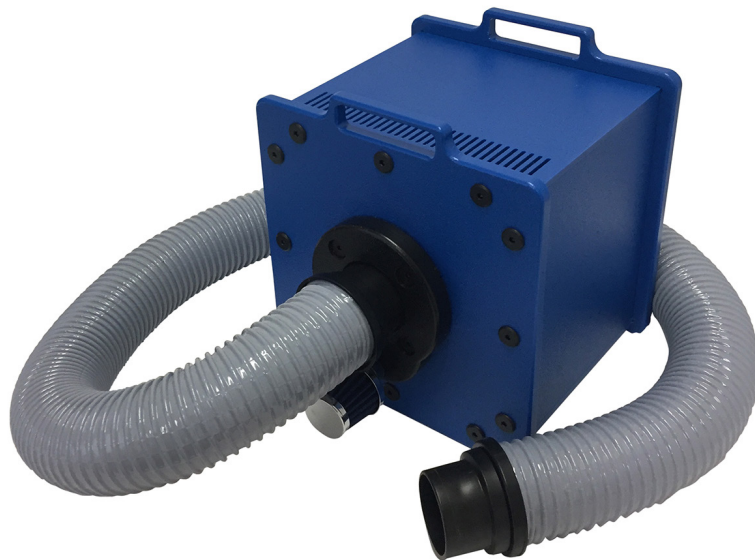




888-680-4466 • ShopBotTools.com

Technical Service Bulletin

For Vacuube™ Universal Vacuum System



This document applies to all iterations of the Vacuube™ Universal Vacuum System (part #004488) purchased before December 16, 2016. We ask that you follow all of these steps to ensure maximum safety and optimal performance from your investment.

1. ENSURE PROPER VENTILATION AND TOOL CLEARANCE

In order to ensure safe and proper operation, this system requires unrestricted airflow in an open space. To avoid risk of overheating or fire, DO NOT obstruct any vent, enclose the unit, or modify housing. Install only in a well-ventilated, open area when using.

If you have modified the unit or placed it in an enclosure, immediately cease all operation until it is restored to its original state. If you are unsure of the state of your system, please continue on to step 4.

2. EXAMINE VENTILATION SLOTS FOR OBSTRUCTION

One side of your Vacuube™ should contain a series of slots to promote airflow and keep the unit cool. Obstruction of these slots can cause the motor to overheat and/or seize. You can check for obstruction of your ventilation slots with a flashlight or other light source by following these steps:

- a. Locate row of 32 ventilation slots on side of unit (side with handles).
- b. Carefully turn unit on its side, so that ventilation slots are facing up.
- c. Shine light source into slots. You should be able to see the metallic motor casing inside. If you notice foam or any other obstruction covering the slots, proceed to step 4.

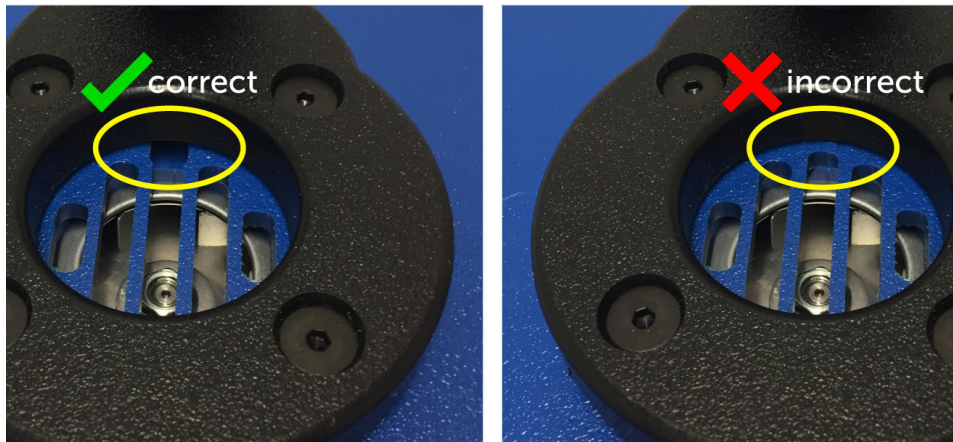


Light shining into vent slots, revealing metallic motor casing.

3. CHECK FOR HOSE-CONNECTION VENTILATION NOTCH

For your safety, the Vacuube™ requires a specific and consistent rate of airflow to maintain proper connection, function, and temperature balance. To facilitate this, there should be an extra notch cut beneath the black hose connection ring to allow for pressure balance. Follow these steps to determine if your unit is properly cut:

- a. Remove hose from side of unit to reveal intake opening, which is a series of five slots in the blue plastic.
- b. Note the middle (longest) slot. It should be cut to extend beneath the black hose connection ring (image below). If the slot does not extend beneath the ring, or you notice any other inconsistencies, proceed to step 4.



Examples of vent with and without notch. Ensure that notch extends beneath black hose ring.

4. CONTACT SHOPBOT TOOLS

If you are unable to complete any of the above steps or notice any problems with your Vacuube™, immediately cease all operation of unit and contact ShopBot Tools at support@shopbottools.com. All Vacuube™ systems purchased before December 16, 2016 are eligible for replacement, free-of-charge. To ensure prompt communication and service, please provide us with:

- Name under which product was purchased (if organization, provide both company and your name).
- Contact information (email address, phone number).
- Brief description of your problem or concern.