

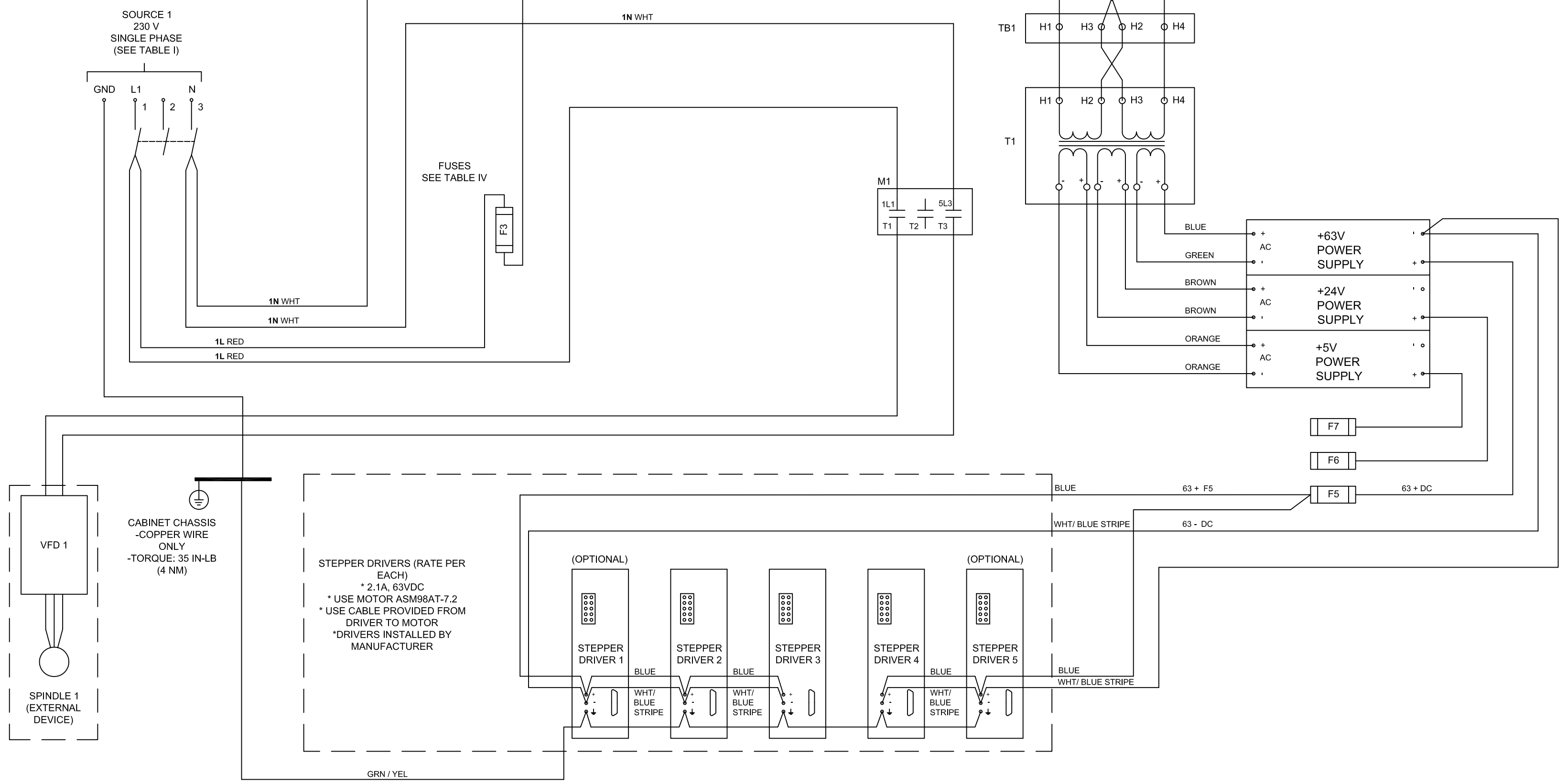
4

3

2

1

CAUTION-RISK OF ELECTRIC SHOCK



STEPPER DRIVERS (RATE PER EACH)
 * 2.1A, 63VDC
 * USE MOTOR ASM98AT-7.2
 * USE CABLE PROVIDED FROM DRIVER TO MOTOR
 * DRIVERS INSTALLED BY MANUFACTURER

ALL WIRING, CONDUCTOR SIZE AND CONDUCTOR TYPE DEVIATIONS MUST BE APPROVED BY SHOPBOT TOOLS
 *CONTACT SHOPBOT TOOLS FOR OPTIONAL WIRING INFORMATION

SPINDLE 1 (FILL IN CIRCLE NEXT TO THE SPINDLE SHIPPED)	TOTAL FULL LOAD	LARGEST MOTOR LOAD	RECOMMENDED BRANCH PROTECTION (INVERSE TIME CIRCUIT BREAKER)(PROVIDED BY ELECTRICIAN)	FIELD WIRING TERMINALS	WIRE SIZE (AWG) *	WIRE TYPE *	SO CORD	SCREW TORQUE
○ 2.2 HP HSD	28.2 A	24 A	60 A	DISCONNECT 1,3	8	75 C	8	31 IN-LBS (3.5 NM)
○ 3 HP COLUMBO	24.8 A	20.6 A	60 A		10	COPPER	8	
○ 4 HP HSD	37.2 A	33 A	90 A		8	WIRE ONLY	6	
○ 5 HP COLUMBO	38.2 A	34 A	90 A		8	WIRE ONLY	6	

SPINDLE 1 (FILL IN CIRCLE NEXT TO THE SPINDLE SHIPPED)	VFD	LOAD	FIELD WIRING TERMINALS	SO CORD	WIRE TYPE *	SCREW TORQUE
○ 2.2 HP HSD	CIMR-V7AU22P2	24 A	CONTACTOR M1-T1, T3	10	COPPER WIRE ONLY	14 IN-LBS (1.6 NM)
○ 3 HP COLUMBO	VFD-022B23A	20.6 A		10		
○ 4 HP HSD	CIMR-V7AU23P7	33 A		6		
○ 5 HP COLUMBO	VFD-037BB23A	34 A		6		

FUSE NO.	RATING
F3	5A CLASS CC (LITTLE FUSE CCMR5A)
F5	10A GLASS FUSE
F6	2A GLASS FUSE
F7	1A GLASS FUSE

CAUTION-RISK OF ELECTRIC SHOCK

DIM UNITS: MM SCALE: NONE
 THIS DOCUMENT CONTAINS CONFIDENTIAL INFORMATION OF SHOPBOT TOOLS. IT IS NOT TO BE REPRODUCED BY ANY MEANS OR USED TO FURNISH INFORMATION TO OTHERS WITHOUT THE EXPRESS CONSENT OF THE OWNER. THE INFORMATION SHALL BE USED BY RECIPIENTS ONLY AS EXPRESSLY APPROVED BY OWNER AND THIS DOCUMENT SHALL BE RETURNED TO OWNER UPON REQUEST.
 ©2008. SHOPBOT TOOLS, INC., ALL RIGHTS RESERVED

ShopBot
 Durham, North Carolina

TITLE: **POWER DIAGRAM 10274-01**

DRAWN: DGC DATE: 29OCT09 CT CHECKED: DATE: 12JAN10 GAB APPROVED: DATE: 12JAN10

SIZE: C DRAWING NUMBER: **002620-00** REV: 0

PART NUMBER: 002620-00 SHEET 1 OF 1

REV	CHG NOTICE	DATE	BY	REVISION DESCRIPTION
0	ECO#190	29OCT09	DGC	SEE ECO FOR DETAIL OF CHANGES

4

3

2

1